



Providing solutions to **quantify the labour force required to meet your company's ever-changing demands.**

- Imprecise hiring
- Insufficient or unqualified staff
- Over-staffing
- Non-compliance with labour regulations

Relieving pressure on management and administration teams while avoiding financial losses.

- Litigating CCMA cases
- Labour disputes
- Strike actions
- Profit lose due to overstaffing

HOW PROBLEMS ARE SOLVED



PAYROL OPTIMISATION

WORKFORCE RELATIONS

QUALITY HR SUPPORT

COMMUNITY GROWTH

CONTINGENCY LABOUR

EMPLOYEE MANAGEMENT

Providing flexible human capital, increasing your operations' agility while reliably decreasing operation expenditure.



Phakisa Fosters A Stable And Sustainable Workforce Using A Composite Staffing Module.



Flexibility: TES



Payroll Management /
Wage Bureau



Recruitment &
Placement



Phakisa Training
Academy



Employee Wellness



HR / DEM –
Outsourced HR
Function



Employee Relations
Management –
Litigation & Unions



People Risk
Management



Talent Management



Process & Logistics
Services



Phakisa at a glance.

- Privately Owned – since 1995
- Leader in the PrEA (Private Employment Agency) Industry
- Corporate Member of Capes / Member of APSO
- Registered with all the relevant statutory bodies & bargaining councils
- Member of the CEA
- Value Adding Supplier – Level I BBBEE
- Annual Turnover in excess of R1.9 Billion
- Executive Directors actively involved in the business
- 364 Corporate Employees
- 18 750 TES Employees Nationally
- 270 years combined industry experience – Executive Team
- National Footprint – All 9 Provinces

ABOUT US | Your Strategic Partner In Human Capital Management.

27 years experience in supplying Temporary, Contract and Permanent staff.

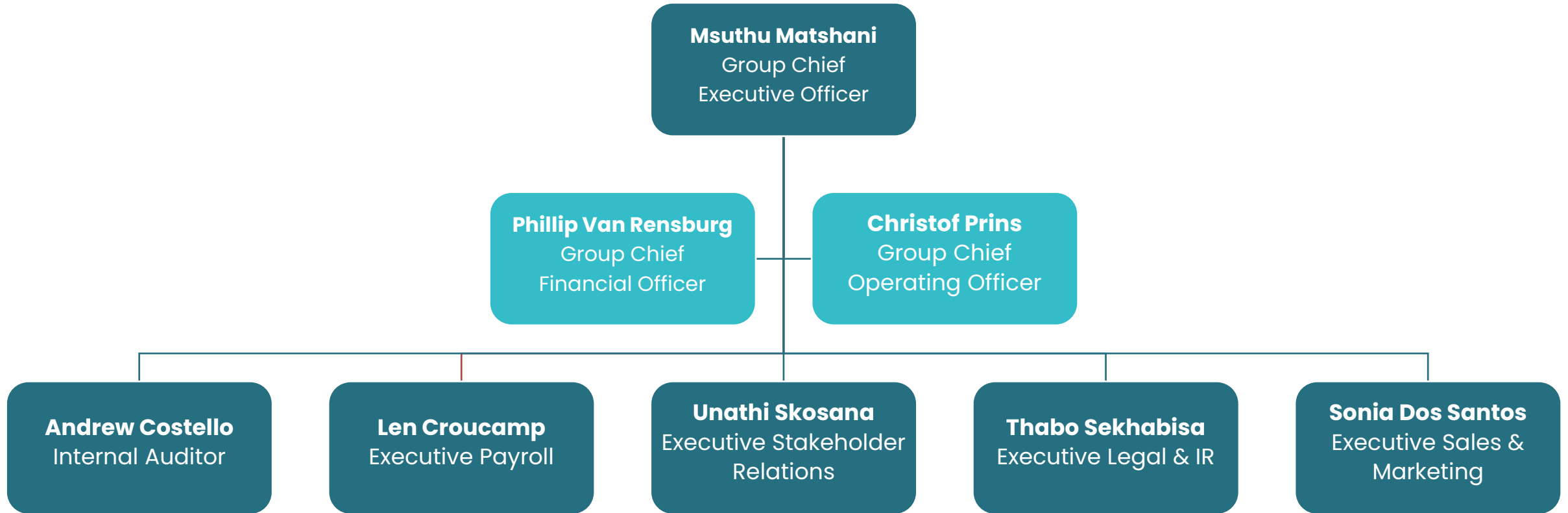
Results and high performance oriented with a strong ethos on compliance, fair Labour practice and transparency.



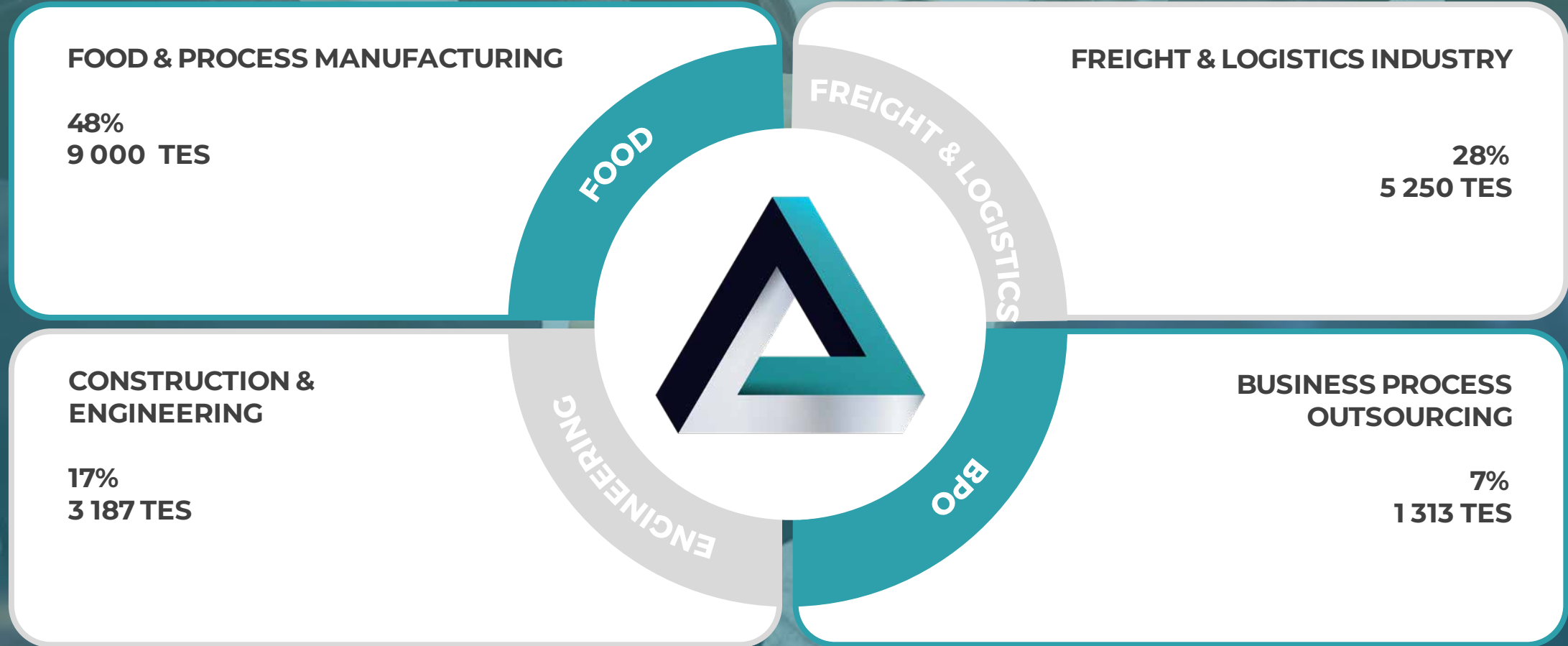
Level 1 BBBEE rated Group since 2007.

A registered Private Employment Agency with registered memberships with Capes, APSO, CEA and the RFA amongst others.

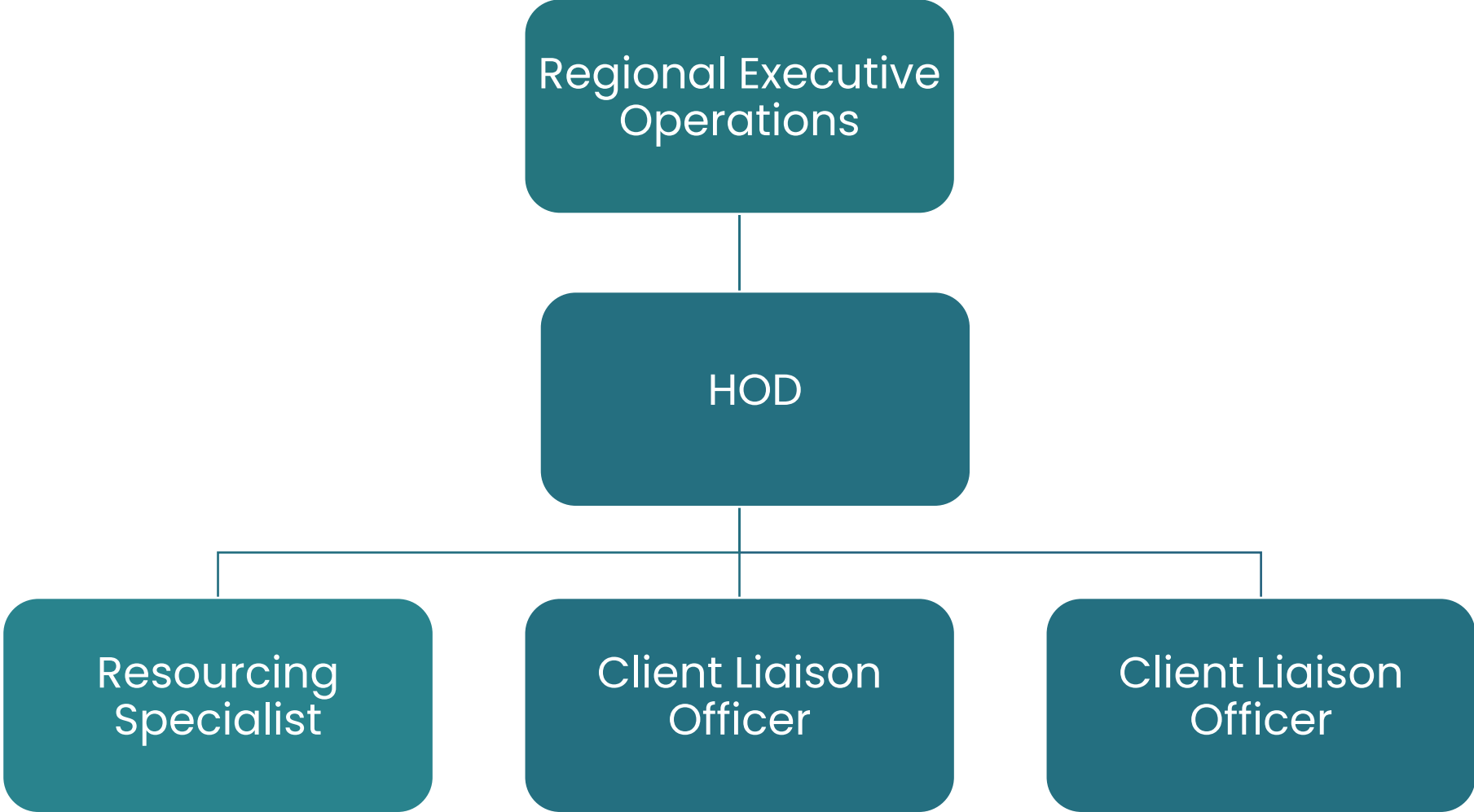
Phakisa group senior management team.



Client Segments



Client Structure



Head Office Support Services



FOOTPRINT

Your Strategic Partner In Human Capital Management



Germiston / Pretoria



Kwa- Zulu Natal / Cape Town / Port Elizabeth / Secunda /
Standerton / Sasolburg / Rustenburg / Worcester /
Polokwane



Tzaneen / Olifantsfontein / Bushvalley / Nelspruit / Malalane /
Bela – Bela / Bloemfontein



Various Site Offices

Find out if we are the solution for you.



www.phakisaholdings.co.za



info@phakisaholdings.co.za



+27 (0) 11 916 1737



17 Robin St, Elspark, Germiston



PHAKISA

...the human resources **solution.**